

# \$599,900 - 232 Chelsea Manor, Chestermere

MLS® #A2210418

**\$599,900**

3 Bedroom, 3.00 Bathroom, 1,368 sqft

Residential on 0.08 Acres

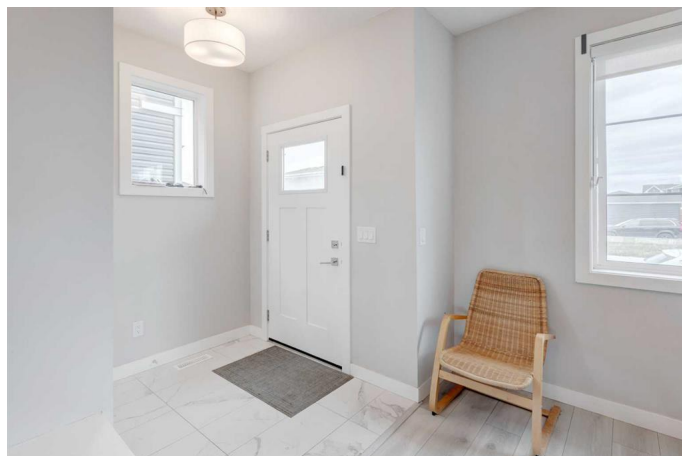
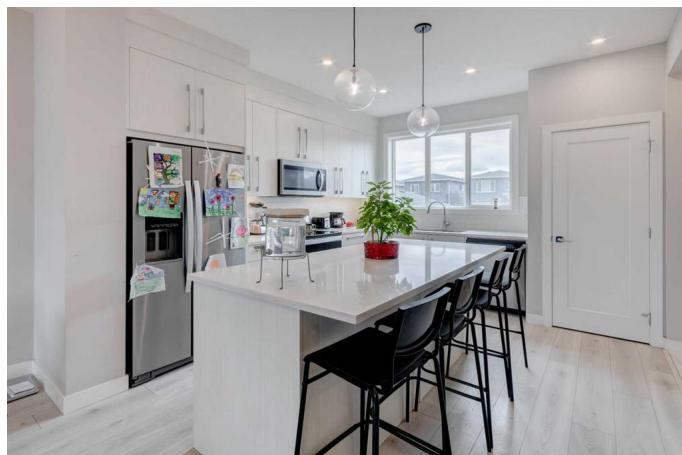
Chelsea\_CH, Chestermere, Alberta

Welcome to luxury living in this 2-storey TRUMAN built home located in the highly sought-after neighborhood of Chelsea in Chestermere. This home is in a prime location and close to numerous amenities. The area will soon feature a new school and a commercial plaza. The main level features a spacious and inviting living room ideal for entertaining guests or cozy family evenings. Adjacent to the living room is a formal and inviting dining area. From your dining room you have your open concept kitchen, featuring an abundance of cabinets, quartz countertops, stainless steel appliances and pantry. Off your kitchen you have a nice mudroom and access to your backyard and garage. As you move upstairs, discover the private primary bedroom with a 4 piece ensuite and walk in closet, 2 additional spacious bedrooms, 4 piece main bath, upper-level laundry and vinyl flooring throughout. Don't miss out on the chance to own this beautiful home.

Built in 2022

## Essential Information

|            |           |
|------------|-----------|
| MLS® #     | A2210418  |
| Price      | \$599,900 |
| Bedrooms   | 3         |
| Bathrooms  | 3.00      |
| Full Baths | 2         |
| Half Baths | 1         |



|                |             |
|----------------|-------------|
| Square Footage | 1,368       |
| Acres          | 0.08        |
| Year Built     | 2022        |
| Type           | Residential |
| Sub-Type       | Detached    |
| Style          | 2 Storey    |
| Status         | Active      |

### Community Information

|             |                   |
|-------------|-------------------|
| Address     | 232 Chelsea Manor |
| Subdivision | Chelsea_CH        |
| City        | Chestermere       |
| County      | Chestermere       |
| Province    | Alberta           |
| Postal Code | T1X0L3            |

### Amenities

|                |                        |
|----------------|------------------------|
| Parking Spaces | 2                      |
| Parking        | Double Garage Detached |
| # of Garages   | 2                      |

### Interior

|                   |   |
|-------------------|---|
| Interior Features | Bathroom Rough-in, Kitchen Island, No Animal Home, No Smoking Home, Open Floorplan, Quartz Counters, Vinyl Windows, Walk-In Closet(s) |
| Appliances        | Dishwasher, Electric Stove, Garage Control(s), Microwave Hood Fan, Refrigerator, Washer/Dryer Stacked, Window Coverings               |
| Heating           | Forced Air, Natural Gas   |
| Cooling           | None  |
| Has Basement      | Yes   |
| Basement          | Full, Unfinished  |

### Exterior

|                   |                                 |
|-------------------|---------------------------------|
| Exterior Features | None                            |
| Lot Description   | Back Lane, City Lot, Level      |
| Roof              | Asphalt Shingle                 |
| Construction      | Brick, Vinyl Siding, Wood Frame |
| Foundation        | Poured Concrete                 |

### Additional Information

|                |                  |
|----------------|------------------|
| Date Listed    | April 11th, 2025 |
| Days on Market | 8                |
| Zoning         | R-1              |

## **Listing Details**

|                |                         |
|----------------|-------------------------|
| Listing Office | Nineteen 88 Real Estate |
|----------------|-------------------------|

Data is supplied by Pillar 9â„¢ MLSÂ® System. Pillar 9â„¢ is the owner of the copyright in its MLSÂ® System. Data is deemed reliable but is not guaranteed accurate by Pillar 9â„¢. The trademarks MLSÂ®, Multiple Listing ServiceÂ® and the associated logos are owned by The Canadian Real Estate Association (CREA) and identify the quality of services provided by real estate professionals who are members of CREA. Used under license.